

NEW SURGERY FINALLY TAKING SHAPE

Plans for the new surgery

Plans for the new surgery at Chew Stoke site are at last beginning to take shape.

Expansion of the current building in Madam's Paddock has proved impossible and the problems with space and access have become insurmountable. With no site nearer the current location being available, both planners and doctors feel that the Radford's site, with its central valley location, offers the best opportunity to provide the high quality premises necessary to deliver the standard of care our patients deserve. The planned building will be three times the size of the current surgery and built to satisfy sustainability requirements. There will be more than 45 parking spaces and the entrance will be away from busy roads. It is also intended that the size of the building will enable allied health care providers to work there with us.

Whilst we wait for a new premises, the practice has built a phlebotomy room which will be used from Jan 2010

It's an exciting project and we look forward to the support of our patients in this move. We recognise that, for some people, our relocation away from central Chew Magna may

be inconvenient, but we feel confident that we can offer a better service for all of our patients from a modern purpose built health centre of appropriate size to the population that we serve.

Your Views

Plans of the New building are on display at the Practice

We are *very* keen to hear your views, positive or negative on the move to the new building. Do you have concerns about how you will get to the new surgery? Do you have a strong opinion about the type of services or facilities you would like to see at the new site? We would like to know.

Please write to us and tell us your thoughts.

You can also email us using the [contact us page](#) of the website or write to Diane Dawson The Practice Manager, Chew Medical Practice, Madam's Paddock, Chew Magna, Bristol, BS40 8PP. Tel: 01275 332420



PLANNING ON GOING ABROAD IN 2010?

CHEWS2TRAVEL

Chews2Travel

In 2009 we extended our care in travel health by running a designated travel clinic – Chews2Travel.

The clinic which is open on a Saturday morning is open to the general public, this means that you do not have to be registered at the surgery.

Travellers receive an individual travel health consultation focusing on numerous travel aspects to help the traveller

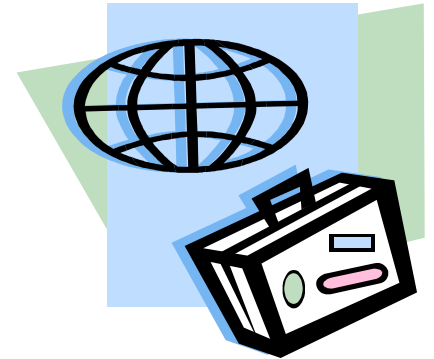
A member of the British Travel health association the clinic is run by trained nurses with access to update travel information via database systems.

Numerous travel items can now also be purchased from the surgery including insect repellents with deet, mosquito nets and water purification tablets.

A display of the items can now be seen in the surgery waiting room.

For more information about Chews2Travel, including prices of travel items, visit the website at:-

http://www.chewmedicalpractice.co.uk/chews2travel_private_travel_clinic.htm



NEW YEAR, NEW START, NEW YOU!

The Practice has a good reputation for supporting patients to quit smoking. Strongly supported by our Health Care Assistant, Anne Yeates, who has won awards for being the best Smoking Cessation Advisor in B&NES, the Practice is pleased to offer appointments

Monday – Friday and Saturday mornings for this purpose.

In addition to the professional advice available, we also offer a range of new improved products including waterproof nicotine patches and

handy niquitin minis. If you are considering making a fresh start to quit smoking, now is the time to make that call. For a Stop Smoking pack or to make an appointment please phone or speak to a member of the Practice team.



DO YOU SUFFER FROM ASTHMA?

When was the last time you had an Asthma review with a Practice Nurse? It is recommended that all asthmatics have a review with a Nurse annually. Please contact the reception team for an appointment.

**CHEW MEDICAL PRACTICE, MADAMS PADDOCK,
CHEW MAGNA, BRISTOL, BS40 8PP
TEL 01275 332420
WWW.CHEWMEDICALPRACTICE.CO.UK**